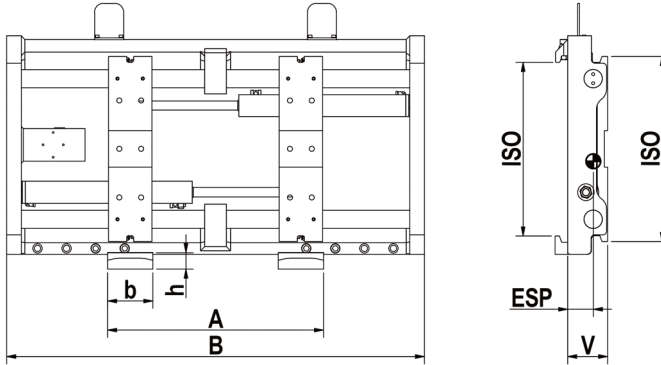


# Fork positioner

integral sideshift, no forks

**The high-performance fork positioner ZVW** offers outstanding durability and excellent visibility. The double chrome axis guideways is particularly clean and enables precise fork positioning due to high-quality hydraulics. Standard forks with ISO mounting or bolt-on forks may be used. The integral sideshift operates depending on fork position. This means that only the fork carriers move inside the static frame.

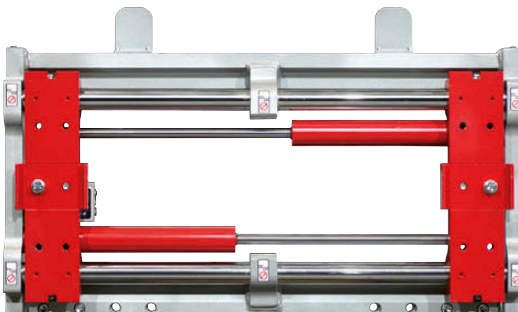


type	capacity kg LC mm	lift truck to LC mm	ISO	B mm	A mm OTO	b mm	V LLC mm	ESP COG mm	weight kg
ZVW 25	2500/500	1,5 - 2,5/500	II	980	320-880	120	107	47	141
				1040	320-940			47	151
				1150	320-1050			46	160
				1200	320-1100			46	165
				1350	320-1250			45	176
ZVW 28	2500/600	2,5/600		1040	320-940			47	151
				1150	320-1050			46	160
				1200	320-1100			46	165
				1350	320-1250			45	176

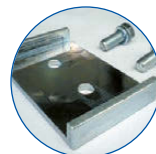
- 2 hydraulic functions required
- includes hoses and couplings
- includes sideshift via valve, depending on opening range
- hook-on or bolt-on forks can be used

- forks not included
- please indicate fork width when ordering
- load backrest/protection strip see page 240

- if you don't want sideshift notify us on your order
- clamping of goods is not allowed



option: protection strip



fork lock